

A microscopic view of several cells, likely cancer cells, showing their internal structures and nuclei. The cells are rendered in shades of blue and green, with some showing prominent nuclei and other organelles. The background is a soft, out-of-focus green and blue gradient.

Altasciences' Proactive Drug Development Solution Small Molecules

Altasciences' Proactive Drug Development Solution—Small Molecules

The process from lead molecule identification to approval can be long and complicated. Altasciences is here to help streamline development and accelerate you through it—from discovery to preclinical, clinical, and beyond.

Altasciences offers an extensive variety of services to seamlessly bring you through each stage of development. These are outlined in the table below and discussed in more detail in the sections that follow.

	DISCOVERY	PRECLINICAL IND/CTA-Enabling	Phase I	Phase II	Phase III	BEYOND Phase IV/ Commercialization
PROGRAM MANAGEMENT	Dedicated Cross-Functional Program Manager					
REGULATORY SUPPORT	Gap Analysis/"You Are Here" Report; Pre-IND Meeting; Design and Execution of Effective Regulatory Strategy	IND/CTA Preparation and Submission and IND Meeting		NDA/BLA Preparation and Submission		
		Preparation and Maintenance of Investigator's Brochure (IB)				
SCIENTIFIC LEADERSHIP	Design and Execution of Effective Drug Development Strategy; Preparation of Investigator's Brochure (IB)	Post-submission Regulatory Request Management				
SAFETY ASSESSMENT		PK/PD				
		Pre-IND Toxicology Study Packages				
		Phase I Dosage Support				
		First-in-Human (FIH) Risk Assessment				
CLINICAL PHARMACOLOGY			FIH Studies			
				POC Studies		
				Customized Studies/NDA-Enabling		
BIOANALYTICAL SERVICES/BIOMARKERS	Discovery and Exploratory Samples	GLP and Non-GLP	Regulated and Exploratory GxP Clinic Sample Analysis			
MANUFACTURING AND ANALYTICAL SERVICES		Drug Formulation		GMP Clinical and Commercial Batch Manufacturing and Analytical Testing		
RESEARCH SERVICES	CRO Services, Including Organizational, Scientific, and Trial Services					

Program Management

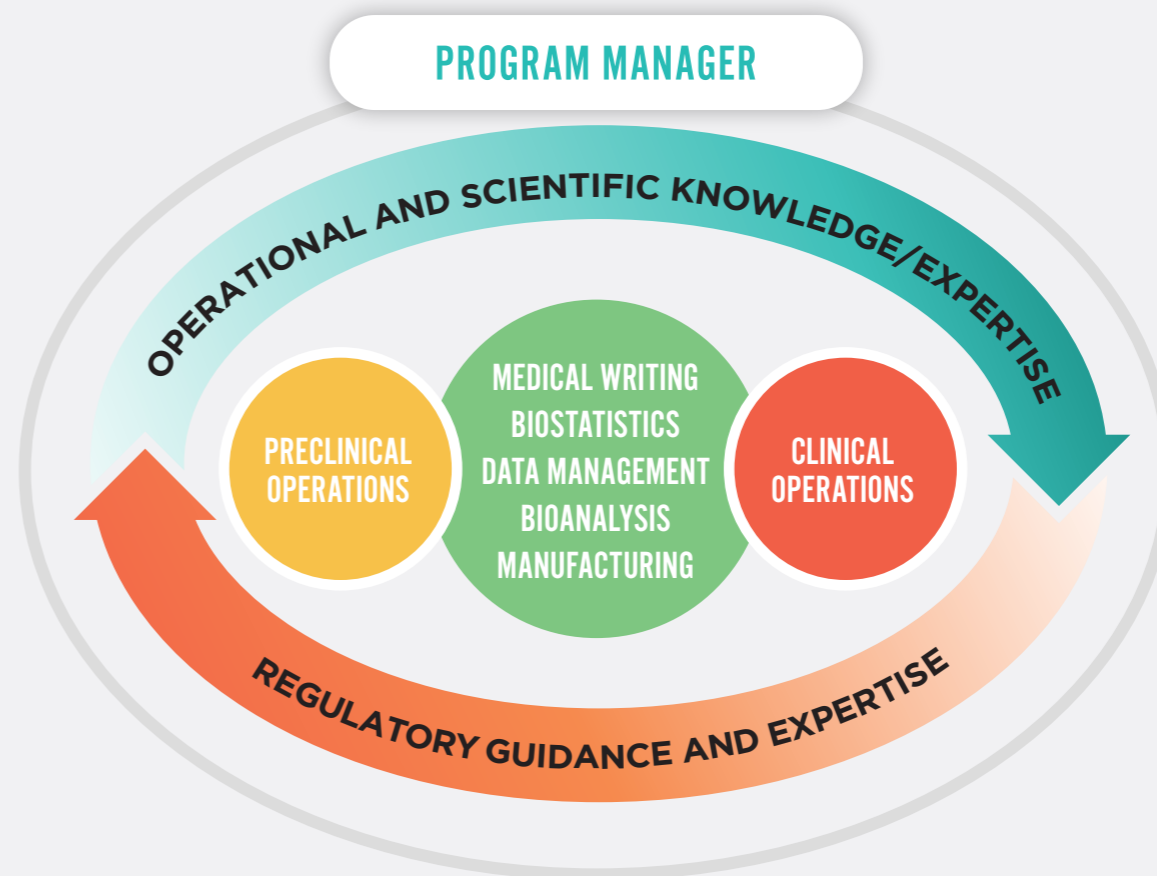
With Altasciences, your entire program is managed by one organization and overseen by a **single, cross-functional program manager**, dedicated to your studies.

Our team seamlessly advances your molecule from preclinical testing to first-in-human clinical trials, and beyond, with a tailored, proactive approach that unites bioanalytical services, preclinical safety evaluation, formulation development, clinic-ready manufacturing, and clinical testing to proof of concept (POC).

One partner guiding your drug development means that some activities can occur in parallel, rather than sequentially, saving you time and costs.

Your dedicated, cross-functional program manager:

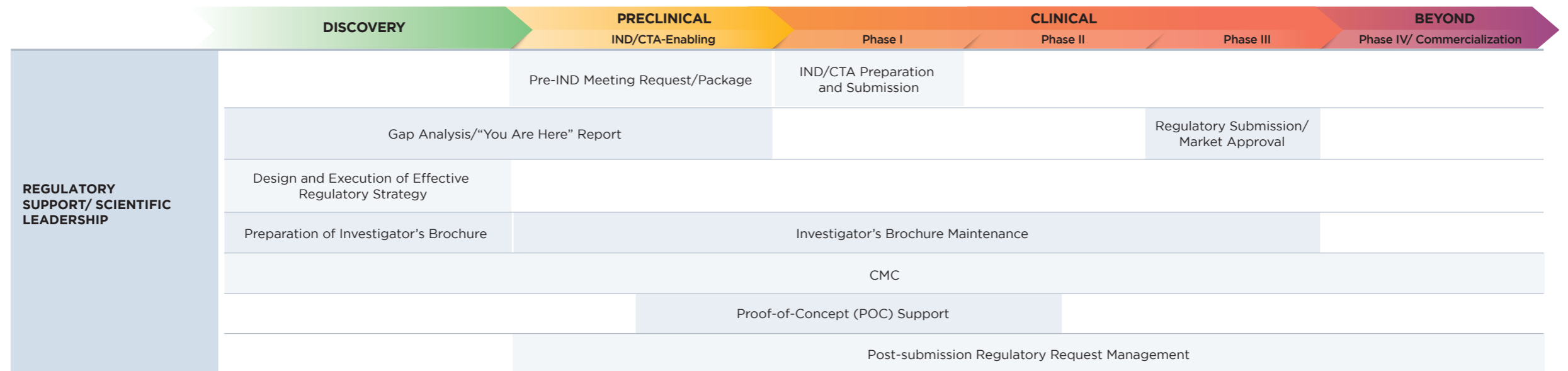
- **Provides** you with a centralized point of contact to improve speed and efficiency.
- **Manages** your study timelines proactively.
- **Leverages** our team of experts to review your emerging data and support your needs.
- **Responds** to your program challenges with solutions, in real time.
- **Shares** all your information across departments and sites proactively, so you only have to Tell Us Once™.





Regulatory Support and Scientific Leadership

Altasciences helps you navigate the complex regulatory environment by preparing study designs that best accommodate your specifications and goals, while ensuring compliance with regulatory agencies internationally. Our team works in close collaboration with you to define your program needs, prepare your Investigator’s Brochure, and facilitate a successful transition between the preclinical and clinical stages of development.



High-Level Checklist: International Regulatory Documents and Meetings

- Design and execution of effective nonclinical and clinical regulatory strategy
- Identification of program gaps, risks, and potential risk mitigation
- Toxicology consulting and strategic advice
- Investigator’s Brochure preparation and/or review
- Chemistry, manufacturing, and controls (CMC)
 - In consultation with our CDMO
- IND only (FDA):
 - Communication with FDA on your behalf
 - Pre-IND gap analysis
 - Pre-IND meeting request
 - Pre-IND briefing package preparation and FDA meeting support
 - IND preparation and submission
- CTA only (Health Canada):
 - Pre-CTA gap analysis
 - Pre-CTA package preparation and Health Canada meeting support
 - CTA preparation, submission, and maintenance
- Post-submission regulatory request management/independent review
- Annual reports, safety reports, and amendments (CTA-A, CTA-N)
- Briefing book preparation and/or review
- End-of-phase 2a (EOP2A) meeting representation

International Guidelines Experience

Health Canada	Canada	Medicines and Healthcare products Regulatory Agency (MHRA)	UK
Food and Drug Administration (FDA)	United States	Therapeutic Goods Administration (TGA)	Australia
European Medicines Agency (EMA)	European Union	Brazilian Health Regulatory Agency (ANVISA)	Brazil
Pharmaceuticals and Medical Devices Agency (PMDA)	Japan		



Safety Assessment

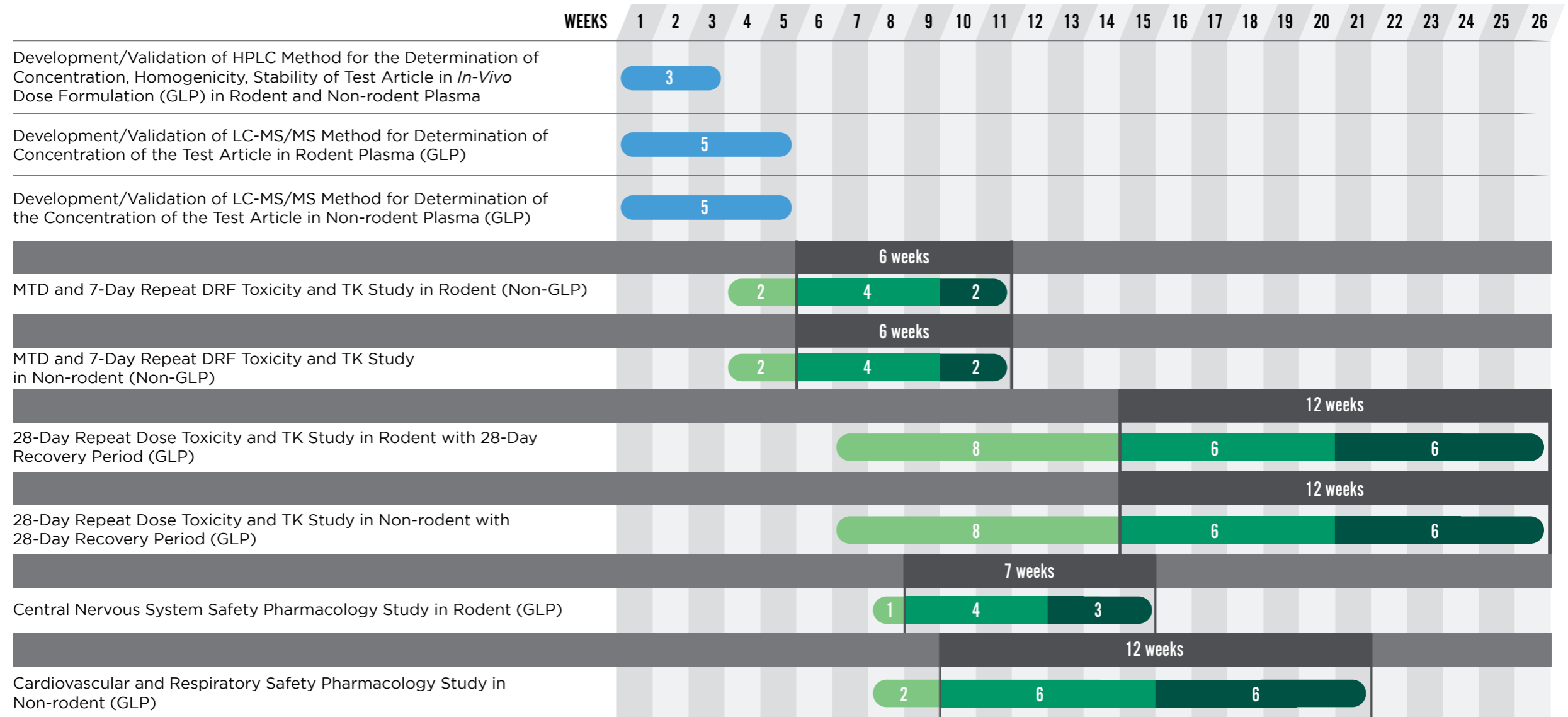
Altasciences has a comprehensive offering of *in vivo* GLP and non-GLP preclinical evaluation studies in both rodent and non-rodent species to thoroughly assess the safety of your molecules. Our solution offering includes IND/CTA- and NDA-enabling toxicology, safety pharmacology, and laboratory services that meet global regulatory requirements.

	DISCOVERY	PRECLINICAL IND/CTA-Enabling	Phase I	Phase II	Phase III	BEYOND Phase IV/ Commercialization
PK/PD	Primary/Secondary PD					
		Metabolites				
	Toxicology/Safety Pharmacology Screens					
PIVOTAL STUDIES	Pre-IND Study Packages					
		Rodent DRF	Subacute Rodent	Subchronic Rodent Toxicity	Chronic Rodent Toxicity	
		Non-rodent DRF	Subacute Non-rodent	Subchronic Non-rodent	Chronic Non-rodent Toxicity	
			Genotox			
OTHER SERVICES		Safety Pharmacology		Carcinogenicity		


Accelerate Your Program


We work in close collaboration with you to accelerate your timeline. We can complete your study in approximately six months by using the program management approach proposed in the chart below for the *in vivo* portion of the IND/CTA program.

To learn more about our approach, consult Issue 11 of [*The Altascientist, "Navigating the IND Submission Process."*](#)



GLP = Good Laboratory Practice; DRF = Dose Range Finding; MTD = Maximum Tolerated Dose; TK = Toxicokinetic

 Study In-Life Conduct

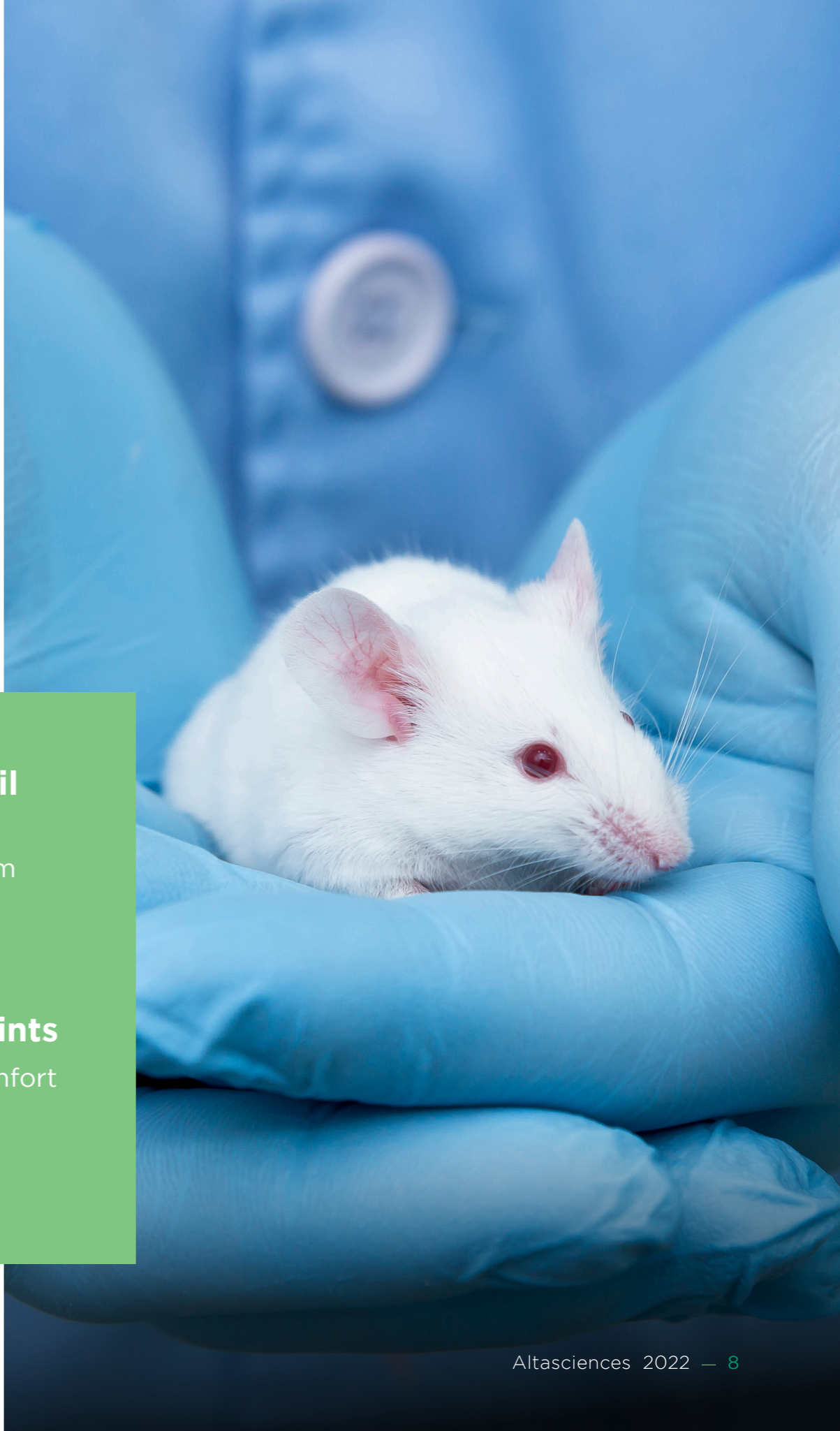
 Pathology Evaluation and Reporting (Clinical Pathology and Histopathology) for the Toxicity Studies; or Data Evaluation and Reporting for the Safety Pharmacology Studies

 Reporting

Commitment to Animal Welfare

The unique position of the Chief Animal Welfare Officer oversees Altasciences' commitment to exemplary animal care and welfare practices. Our staff members are specifically selected for their compassion toward animals, and are fully trained to the highest standards of laboratory animal care. We are focused on environmental enrichment, and understand the importance of compassion, sensitivity, and adherence to regulatory guidelines.

Our methodologies, procedures, and equipment are refined to decrease stress on the animals, improve workflows for technicians, and ensure the success of your study. As part of our **C.A.R.E. program**, we are committed to the 3Rs (replacement, reduction, and refinement).



C.A.R.E.

- A contract signed by every employee to iterate their commitment to prioritizing the humane care of animals used in research

Veterinarian Committee

- For decision-making in difficult euthanasia situations

Feel the love 

Animal Welfare Council

- Made up of veterinarians, scientists, and members from the community

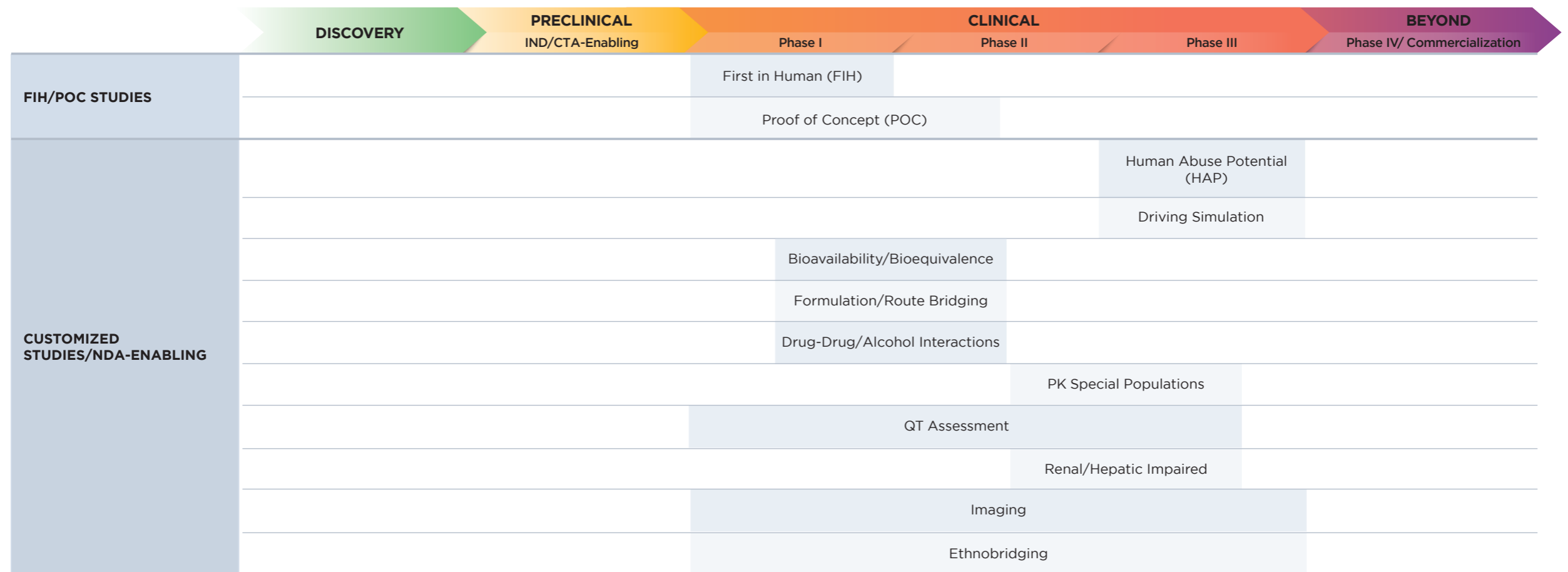
Use of Humane Endpoints

- To minimize pain and discomfort

Clinical Pharmacology

Altasciences' team designs, conducts, and reports on all clinical pharmacology studies required for regulatory submissions across a wide range of therapeutic areas. We use a centralized medical/operation triage system to review all protocols and choose the optimal path forward for your study. Our purpose-built clinical pharmacology units house over 500 beds, and our seamless processes deliver safety and quality combined with speed and ease.

Our integrated approach allows us to efficiently leverage preclinical data to design your clinical trials.



Clinical Pharmacology Expertise

First in Human, Proof of Concept, and Clinical Pharmacology

We have conducted more than 400 first-in-human trials at our clinics since 2010, and are conducting 30 per year across our locations. Adaptive designs that allow for changes based on analysis of human data collected during the trial are easily accommodated by leveraging our integrated clinical conduct, bioanalytical, and manufacturing capabilities.

- Scientific and regulatory consulting
- Dedicated program manager
- Cross-functional team
- Centralized scheduling system
- Clinic-ready, small molecule manufacturing
- Bioanalysis
 - Timed interim sample analysis for dose escalation decisions
 - Rapid turnaround of PK/PD analysis between cohorts
 - Retention rates of over 95%





Areas of Expertise

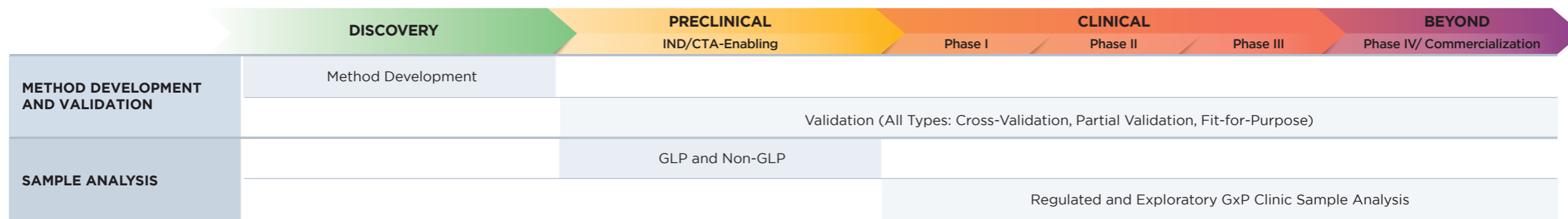
- **First in human** (including SAD/MAD) and proof of concept
 - More than 400 FIH trials conducted
- Human abuse potential (HAP), abuse-deterrent formulation (ADF), and substance abuse
 - Over 50 studies conducted since 2008
- Driving simulation
 - Over 15 pivotal studies
 - More than 13,000 simulated drives
- Ethnobridging
 - Reduction of drug development timelines by streamlining process of meeting international regulatory requirements
 - Over 200 ethnobridging studies since 2004
 - Over 9,000 Asian participants in our database
- Bioavailability/bioequivalence
 - Study design database of over 1,200 products/combinations
- Drug-drug/alcohol interactions
 - Hundreds of studies conducted, including cocktail and single challenge
- Pharmacokinetics in special and patient populations
 - Testing of different BMIs, sexes, genotypes, and ages
 - Testing in targeted patient types and patients of concern
- QT assessment
 - Can be done during FIH studies or post-Phase II as dedicated thorough QT (TQT)
 - Over 50 studies conducted
 - Clario-certified
- Renal/hepatic impaired
 - Over 10 studies performed in partnership with leading external sites
- Imaging
 - Over 20 studies performed with nearby partners
 - X-ray, CT scan, MRI, ultrasound, DEXA, endoscopy, and colonoscopy

Bioanalytical Services

We offer a broad range of bioanalytical services from discovery to preclinical to Phase IV, conducted in state-of-the-art, purpose-built laboratories at our locations in the U.S. and Canada, with designated containment Level 2 areas for work with Risk Group 2 pathogens. Staffed by highly skilled analysts, with shifts running 24/7 (as needed), we can process over 60,000 study samples per month. Bioanalytical services are available as stand alone solutions, or as part of an end-to-end development package.

Capabilities at a Glance

- Over 25 years of experience with small molecules
- In-house database of over 685 assays covering 650 molecules
- Over 25 research and development scientists
- Over 300 highly skilled bioanalytical experts
- Over 30 liquid mass spectrometers, including SCIEX 6500 and Q Exactive
- Assigned bioanalytical Principal Investigator
- Microsampling expertise with a variety of collection devices (liquid and dry matrices)
- Qualified vendors to facilitate synthesis of stable label internal standards
- Wide array of biological matrices in both humans and animal species:
 - Serum
 - Plasma
 - Blood
 - Urine
 - Feces
 - Animal tissues
 - Cerebrospinal fluid
 - Human tissue biopsies
 - Tears
 - Saliva
 - Vitreous humor



Manufacturing and Analytical Services

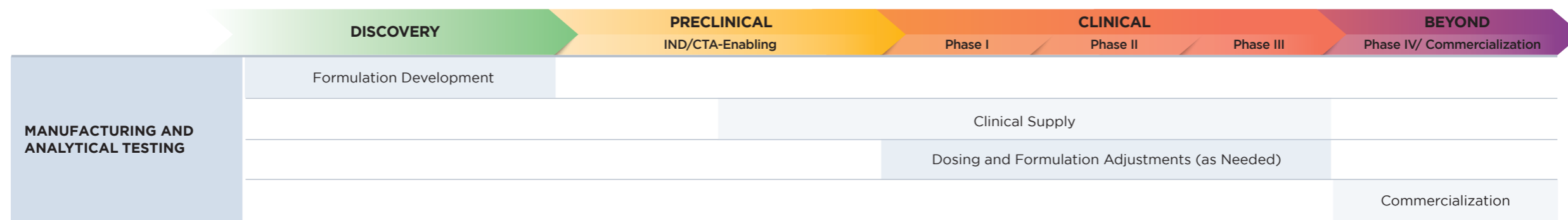
Having manufactured almost every dosage form currently on the market, Altasciences is with you throughout your entire drug development process. Whether for a single manufacturing project or a comprehensive package that scales up from discovery to preclinical and clinical, and straight through to commercialization, we provide a comprehensive range of services. Altasciences has the experience, expertise, and state-of-the-art equipment to ensure that all of your small molecule formulation requirements are met.

Capabilities at a Glance

- Manufacturing services:
 - Formulation and product development
 - Multiple dosage capabilities
 - Highly potent compounds/Grade C and D manufacturing
 - DEA manufacturing and analytical license for drug Schedules I-V
 - Clinical supply manufacturing and packaging (Phase I-IV)
 - Commercial manufacturing
- Analytical services:
 - Method development and validation
 - Product release testing
 - ICH stability testing
- cGMP warehouse storage

Commercial Products

- OTC powder-filled capsule (gelatin banding)
- HPMC banded capsule
 - Drug-coated capsule
 - 505(b)(2)
- Effervescent blend (two intermediate processes)
- Rx liquid-filled capsule
- Rx nanomilling suspension
- Medical device blister cup



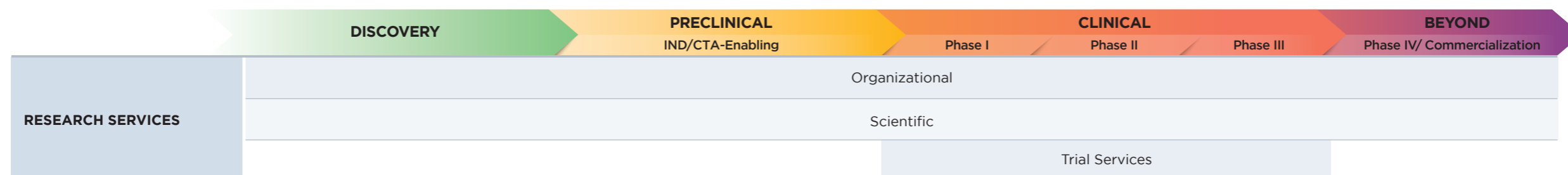


Research Services

Altasciences offers a wide variety of complementary CRO research services for each stage of your small molecule drug development program. These are available as stand alone offerings or as part of an integrated drug development program for your small molecule, all customizable to your specific request.

Complementary CRO Research Services

- Organizational:
 - Full-time equivalent agreement (FTE) capabilities
 - Due diligence assessment
 - Post-acquisition integration
 - Vendor/subcontractor qualification and management
- Scientific:
 - Strategic scientific publication guidance and development
 - Regulatory science
 - Clinical protocol development
 - Clinical program design and strategy
- Trial services:
 - Project/program management
 - Biostatistics
 - CDISC/SEND
 - Data management
 - Clinical monitoring
 - Site feasibility and qualification
 - Clinical sample management



Proactive Drug Development Solution

Altasciences accelerates decision-making by offering expert guidance and synchronized early phase services to reduce timelines by up to 40%. Our integrated solution drives success at each milestone with a tailored program that unites bioanalytical services, preclinical safety evaluation, formulation development, clinic-ready manufacturing, on-demand clinical pharmacy, and clinical testing to proof of concept, all within one organization. With drug development managed by one partner, activities can occur in parallel, rather than sequentially. Altasciences can support your entire drug development programs end to end, or you can partner with us for just one study—we offer you complete flexibility using the same approach.

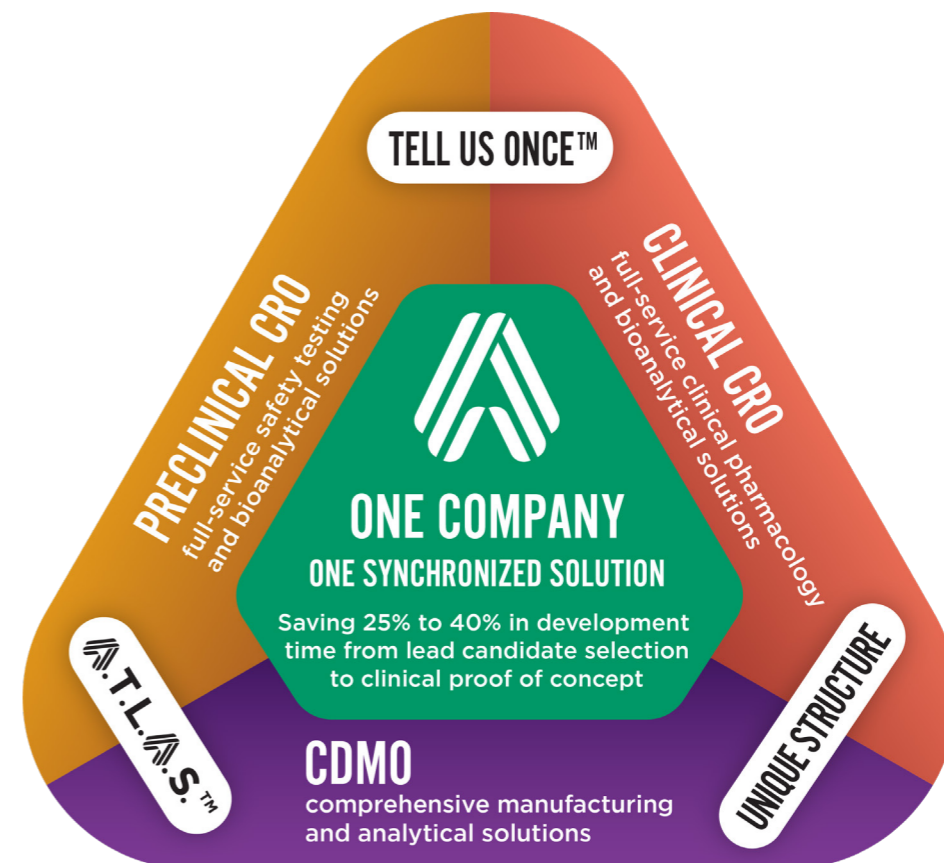
[Learn more](#) about our integrated solution.



Proactive Drug Development is based on three core pillars.

- **How we communicate**—Tell Us Once™
- **How we bring a project to life**—A.T.L.A.S.
- **How we organize ourselves**—A unique organizational structure

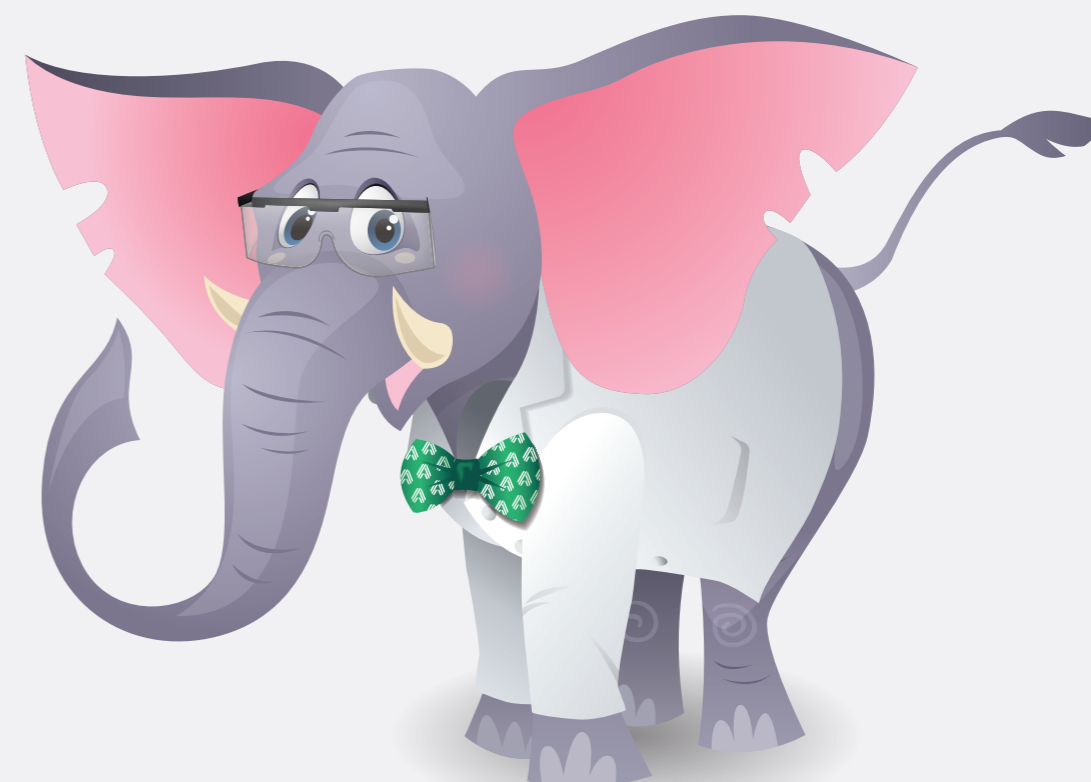
[CEO Explains Proactive Drug Development](#)



How We Communicate

Ask Albert, Altasciences' proprietary client database, is the backbone of our integration and information-sharing capability, allowing us to conceptualize your entire program and adapt to any new information as your small molecule advances through the development process. So, you only have to **Tell Us Once™**.

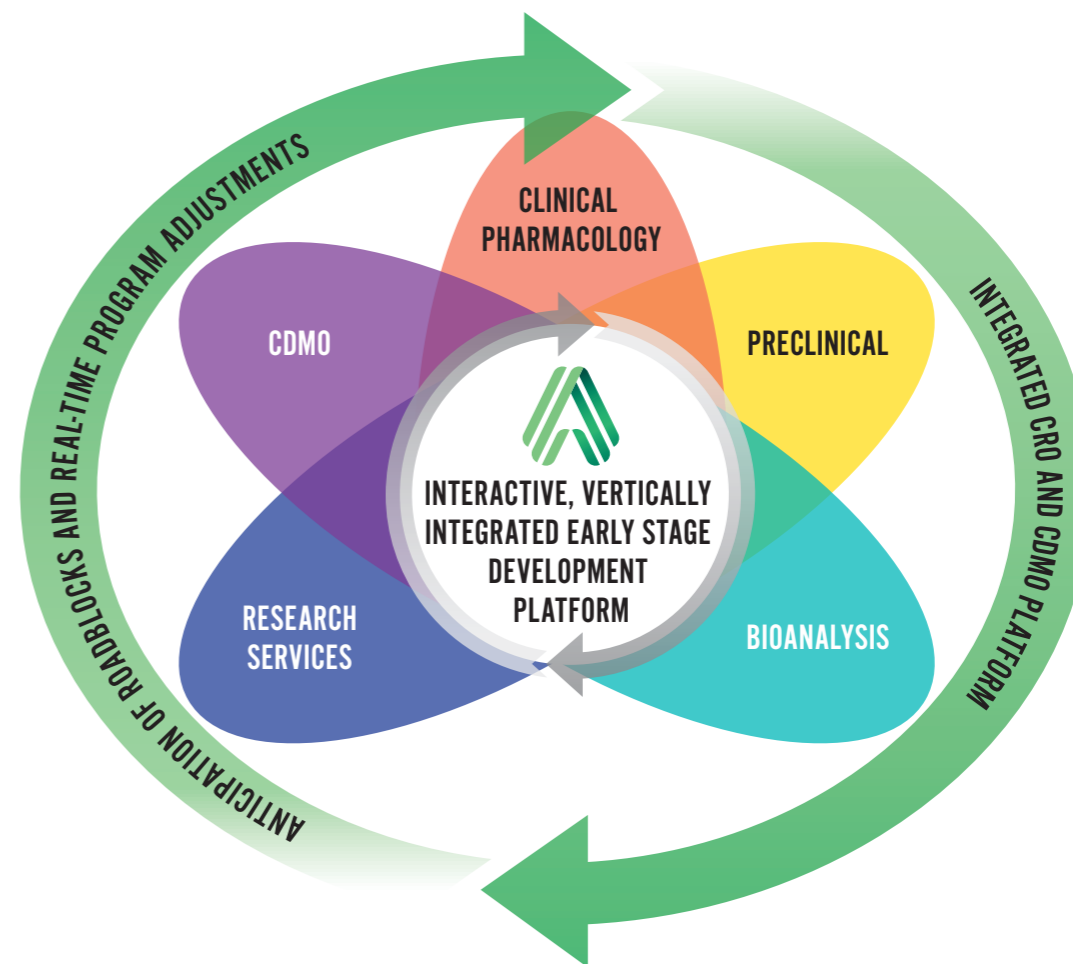
[Discover our Tell Us Once™ Commitment](#)



How We Bring a Project to Life

A.T.L.A.S.™ is our interactive, vertically integrated approach to managing study conduct and our workflow. We provide strategic scientific guidance to your program, and use our program management and proprietary scheduling system to centrally coordinate all activities between services and phases of development.

[Learn more](#)



How We Organize Ourselves

Our **unique organizational structure** begins with two executives leading all scientific and operational teams, integrating study phases and departments to eliminate silos, ensure communication, and move your small molecule through development quickly and safely.





Altasciences is a forward-thinking, drug development solution company offering pharmaceutical and biotechnology companies a proven, flexible approach to preclinical and clinical pharmacology studies, including formulation, manufacturing, and analytical services. For over 25 years, Altasciences has been partnering with sponsors to help support educated, faster, and more complete early drug development decisions. Altasciences' integrated, full-service solutions include preclinical safety testing, clinical pharmacology and proof of concept, bioanalysis, program management, medical writing, biostatistics, clinical monitoring, and data management, all customizable to specific sponsor requirements.

Altasciences helps sponsors get better drugs to the people who need them, faster.

[CONTACT US](#)

[DISCOVER THE DIFFERENCE](#)